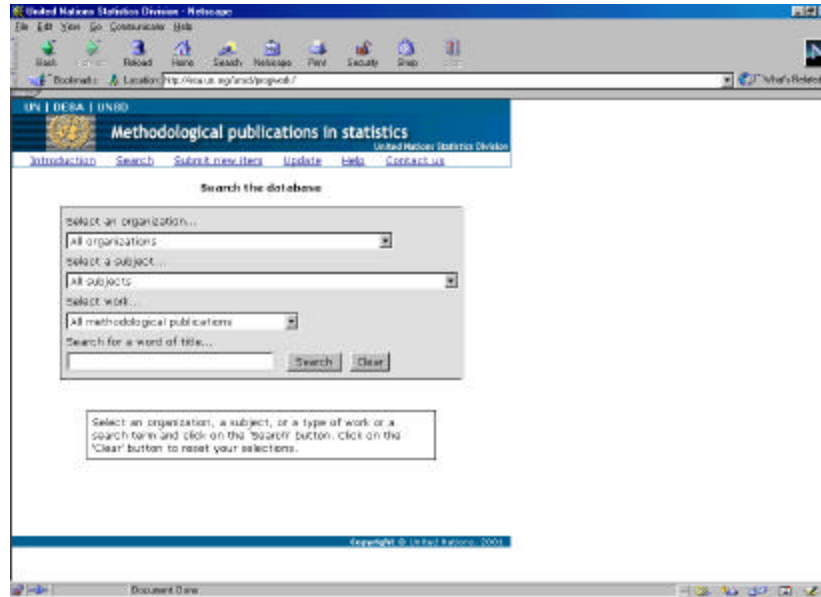


# UNSD Websites

**Instruction to the  
“Methodological Publication in Statistics” web site:  
<http://esa.un.org/unsd/progwork>**

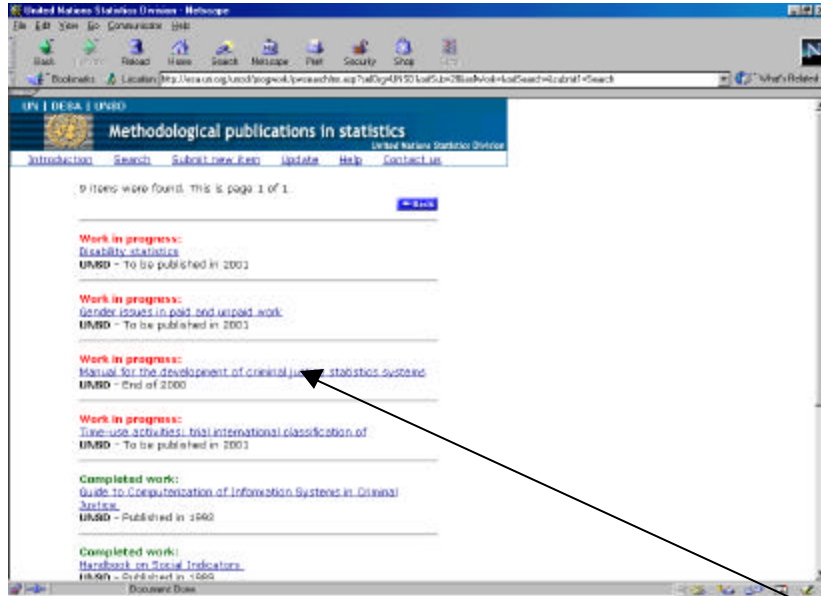


To browse or view the content of the database:

- ❑ an entry in each of three fields must be selected:
  - **Organization:** select either *all organizations* or one of the individual organizations in the drop-down list;
  - **Subject:** select either *all subjects* or one of the individual subjects in the drop-down list. The subjects shown in the list correspond to an alphabetical listing of those contained in the revised ACC Programs Classification.
  - **Work:** select *all work* to see an alphabetical listing of both work in progress (listed according to **project** name) followed by a listing of all completed work (listed according to the **title** of the publication). Alternately, select *work in progress* to see an alphabetical listing of ongoing projects only, or select *completed work* to see only an alphabetical listing of publications issued by the organizations.

(The *Search* field should be left empty at this point if what is desired is a comprehensive listing of the organizations' work in all or one particular subject).

- Click on *Search* button.



- Once the listing appears, to view more details on a particular entry in the list, click on the underlined text.
- To return to the main screen from any other screen, click on the *Back* button until the main page is reached, or on *Search* on the upper left side of the screen.

**To search the database:**

- Searches can be performed from the main page only (if the page or screen that you are on does not contain the search field, click on *Search* to reach the opening page).
- To search the entire database, select *all organizations*, *all subjects* and *all work*, and enter the word(s) in the search box that you want to find. Narrower searches can be performed when an individual organization, subject and category of work is selected.
  - HINT: If a search fails when a particular subject is selected, it is advisable to try again by selecting *all subjects*.
  - Example: To search for entries pertaining to work on crime or criminal justice statistics, the search will be successful only if the correct lowest level subject field has been selected. That is, if the subject “social and demographic statistics” is selected when performing the search for “criminal justice”, even though criminal justice statistics is subsumed in the overall demographic and social statistics category, the entries will not be found since in the database they have been classified in the ACC classification category “other social, demographic and related statistics.”

## “Website on Good Practices in Official Statistics”

<http://esa.un.org/unsd/goodprac/default.asp>

or

via the sitemap at: [http://www.un.org/depts/unsd/sd\\_sitemap.htm](http://www.un.org/depts/unsd/sd_sitemap.htm)

This is the opening search page:

UN | DESA | UNSD

Good practices in official statistics  
United Nations Statistics Division

[Introduction](#) [Search](#) [Help](#) [Contact us](#)

Search the database

All countries and organizations  
Armenia  
Australia  
Belarus  
Cyprus  
Czech Republic

All keywords  
Advisory bodies (principle 1.)  
User consultation (principle 1.)  
Organizational planning and operation (principle 1.)  
Presentation of statistics (principle 1.)  
Dissemination and marketing (principle 1.)

Search Clear

Document: Done

For an immediate **search**, please select a country or an organization or select the option "All countries and organizations". Then select one of the keywords or "All keywords". You will find the principles to which a keyword is related to, in the brackets. If you want to search for more than one country or keyword, please press Shift key and select from list box sequential numbers of rows or press Ctrl key and select any rows you were searching for. You may use the clear button to undo your choices. Finally hit the search button.

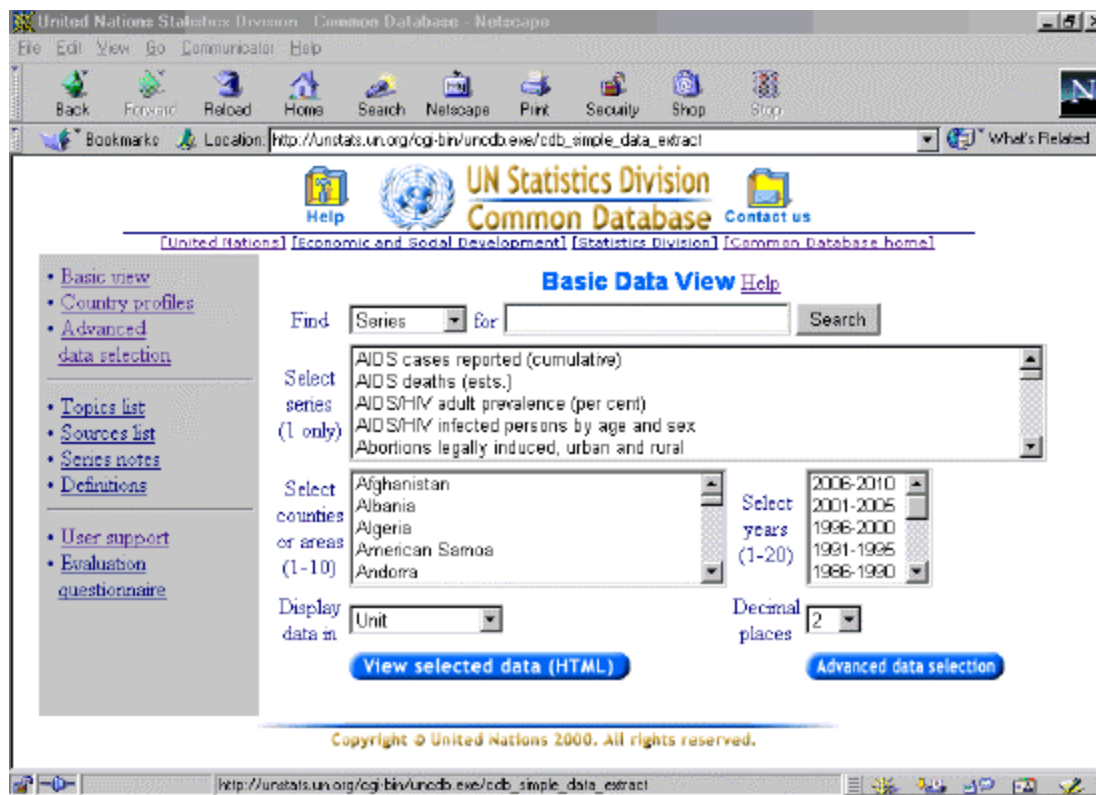
The **result** of your search choices you will be presented as a list of documents each followed by the keyword(s) you were searching for. Choosing one of these keywords will lead you to the whole document, in which the paragraphs that related to this keyword are highlighted.

Selecting **Introduction** from the top menu bar will lead you to a description of the ten Principles of Official Statistics, which the Statistical Commission adoption at its 1994 session. Hitting a highlighted keyword will automatically lead to a search of the whole database for that keyword. The page **Help** may give you more advice on how to use the website and the page **Contact** us gives you some information on the United Nations Statistics Division and on contact persons within the division.

## UNESIS Common Data Base

[http://unstats.un.org/cgi-bin/uncdb.exe/cdb\\_simple\\_data\\_extract](http://unstats.un.org/cgi-bin/uncdb.exe/cdb_simple_data_extract)

This is the opening search page



This screen allows for quick view of relatively small amounts of data. To operate it, select one series, up to 10 countries and up to 20 years (up to four lines in the year selection box). One may also wish to rescale the data using the "Display data in" drop-down box, as well as the "(Number of ) Decimal places" box. For instance economic data is usually presented in millions with no (zero) decimals.

After the selections are made, press the "View selected data" button and the program will display the data.

One may use the search mechanism to locate the desired series and countries. To search for series, make sure that the drop-down box after "Find" says "series" (not "countries") and type one or more words describing the series you are looking for. The search is always for series containing ALL of the words specified in the search argument box. The more words are specified, the more focused the search is and fewer results are returned. If the search returns too few series (possibly none), try to search with fewer words. If the search is returning too many series, search again with more words in the search argument.

For instance a search for the word "birth" returns seven series, while the search for "birth rate" returns only one.

To search for a country select "Countries" in the drop-down box after "Find" and type one or more words of the name of the country you are looking for in the search argument box.

To restore the full list of countries and/or series after a search, clear the search argument box and hit the "Search" button again (submit a search with an empty argument list).

After all components of the query (series, countries and periods; presentation units and number of decimals) have been selected, press the "View selected data" button and the data will be displayed, together with the relevant footnotes. The series names displayed are clickable. The link leads to the definition of the corresponding series.

Simple calculations are defined for certain series. If the series selected allows any calculations, these are displayed in a drop-down box above the data and can be activated by pressing the "GO" button next to the drop-down box. The series "Capital form., gross fixed, nat'l cur'cy, cur't prices (IMF)" has the following calculations defined:

- 3-years moving average;
- convert to US\$;
- Shares of Gross capital formation;
- Shares of GDP and;
- Per capita.