

Country Led Innovations to Address Low Data Challenges- Ghana's Experience

Samuel Kobina Annim
samuel.annim@statsghana.gov.gh

Ghana Statistical Service

19th February 2025



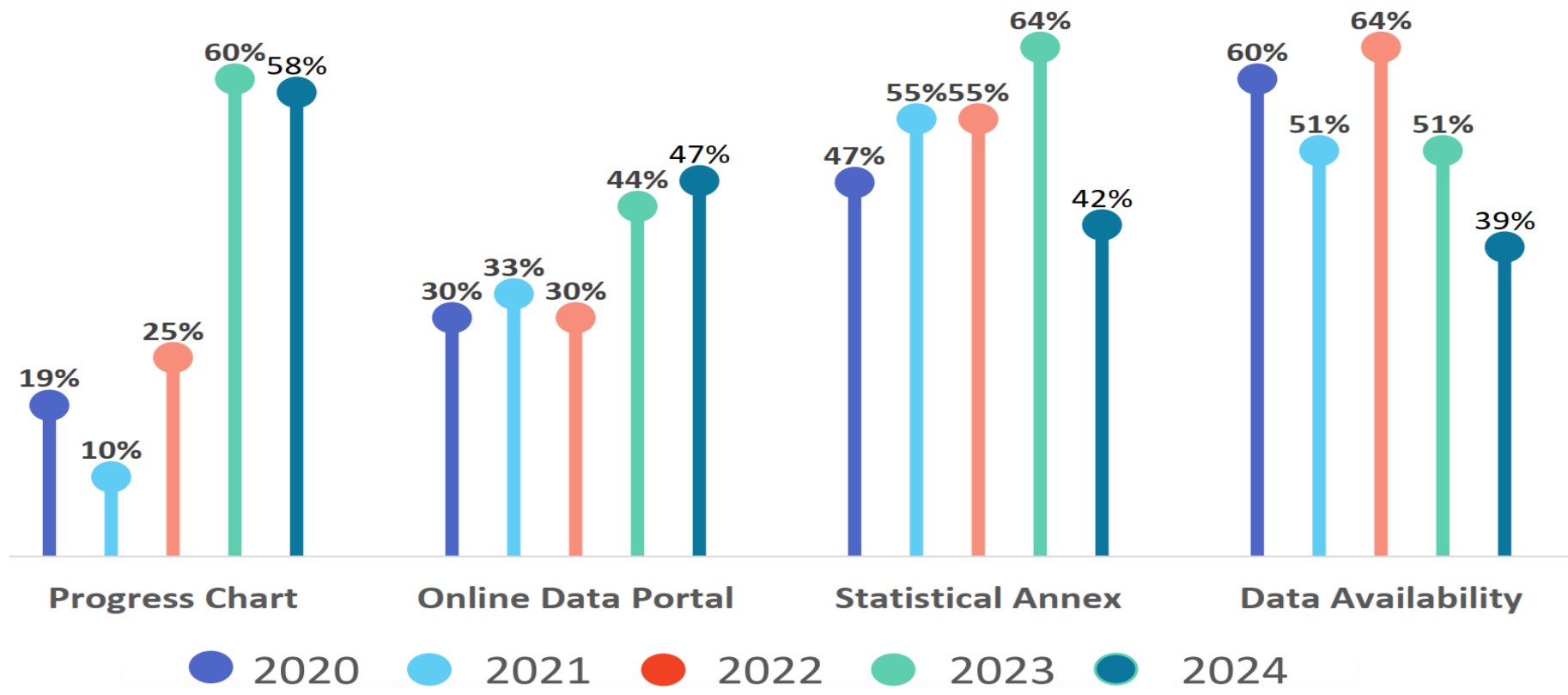
GHANA
STATISTICAL SERVICE

OUTLINE

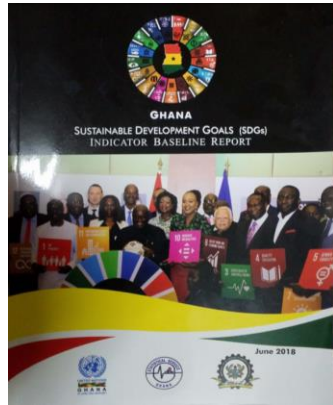
1. Progress in SDGs monitoring
2. Using data science tools for local level SDG monitoring for **SDG 1**
3. Machine learning for scraping 20 years of pdf data for **SDG 4**
4. Citizen data for **SDG 5, 11, 16**
5. Mobile Phone data and disasters **SDG 11**
6. Leveraging CSOs data to monitor **SDG 14**
7. Earth observation data for monitoring **SDG 15**
8. Going beyond reporting

The Global Performance

Proportion of Countries Incorporating Data Elements in VNRs (2020-2024)

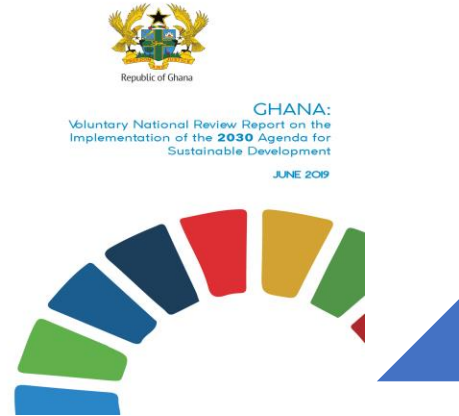


Progress in SDGs Monitoring in Ghana



2018

Baseline
indicators = 70



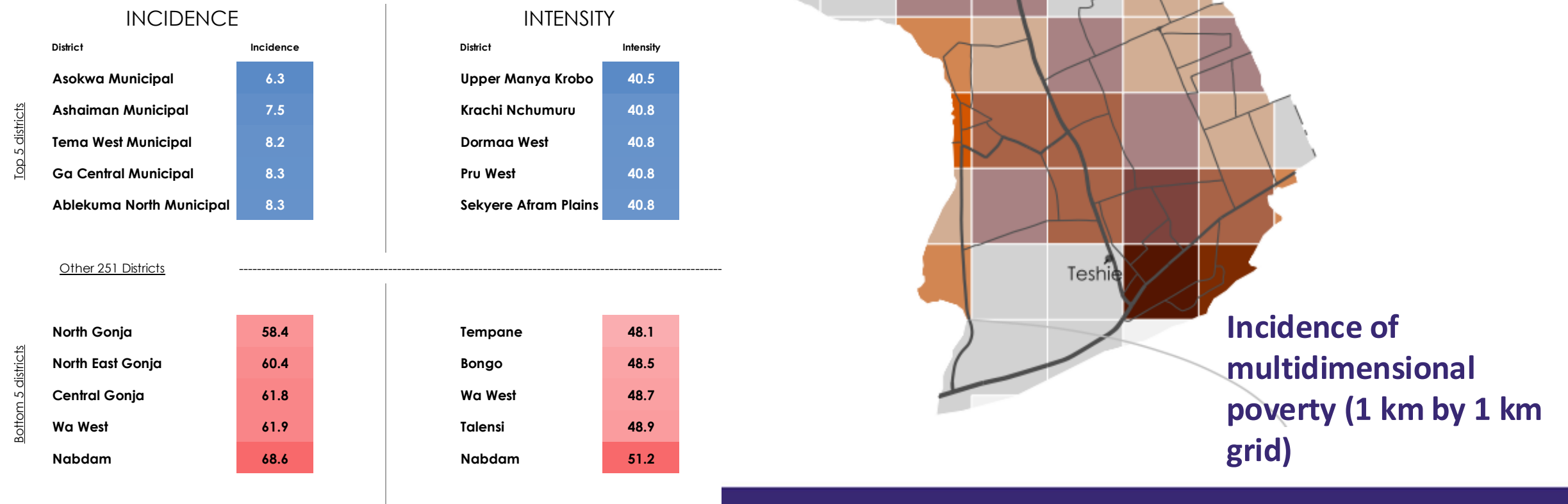
2019 VNR
indicators =
73



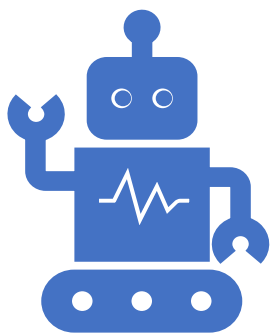
2022 VNR
indicators =
102

2025 VNR
indicators =
140

Leveraging Data Science Tools for Local-Level SDGs Monitoring (SDG 1.2.2)



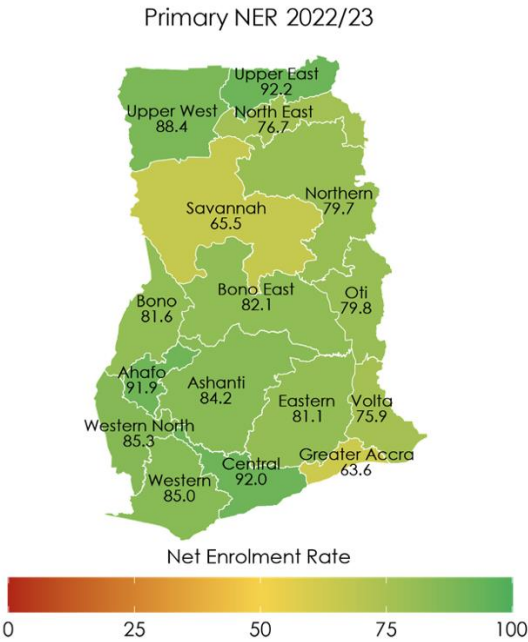
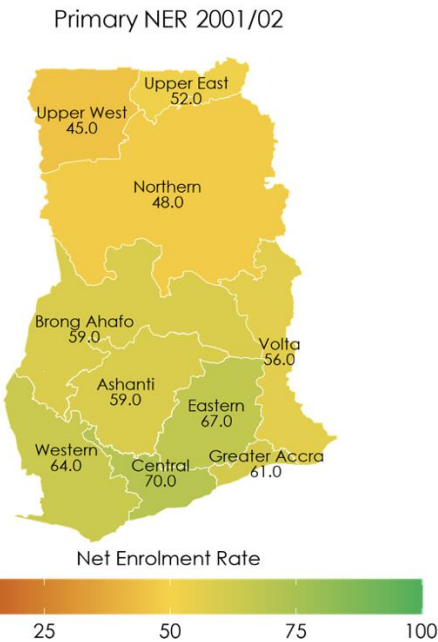
Access to and Quality of Education using Administrative Data (SDG 4)



Using data science toolbox for automated scraping, verification, and quality check



Source data in PDF reports for each year from 2001 to 2021



User-centric citizens' data Apps for local- level data

Indicators

- 5.2.1
- 5.2.2
- 11.7.2
- 16.1.3
- 16.6.2

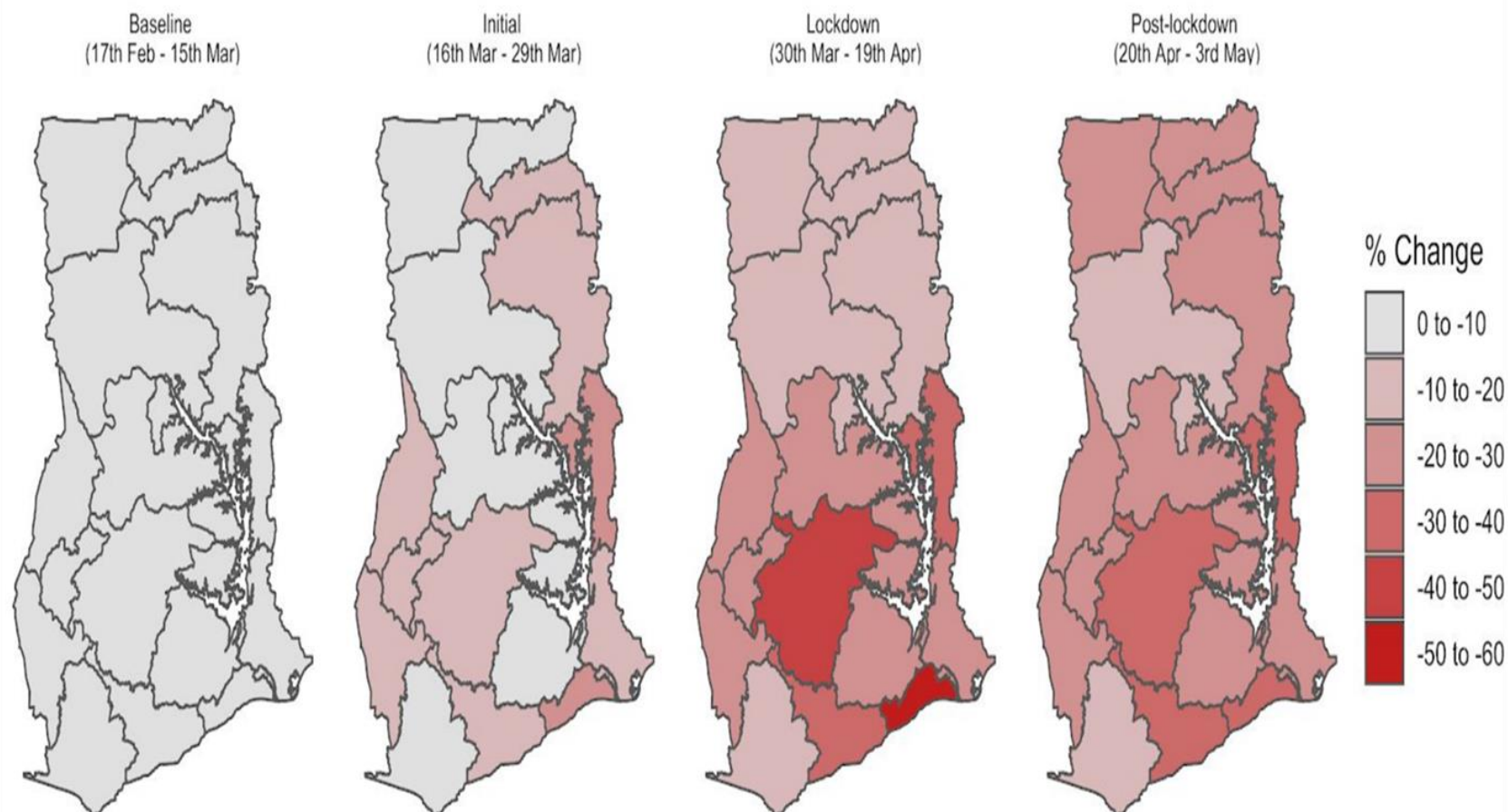




MOBILE PHONE DATA CAN PROVIDE VALUABLE INSIGHTS INTO POPULATION DYNAMICS, WHICH IS CRITICAL FOR POLICY FORMULATION AND PLANNING

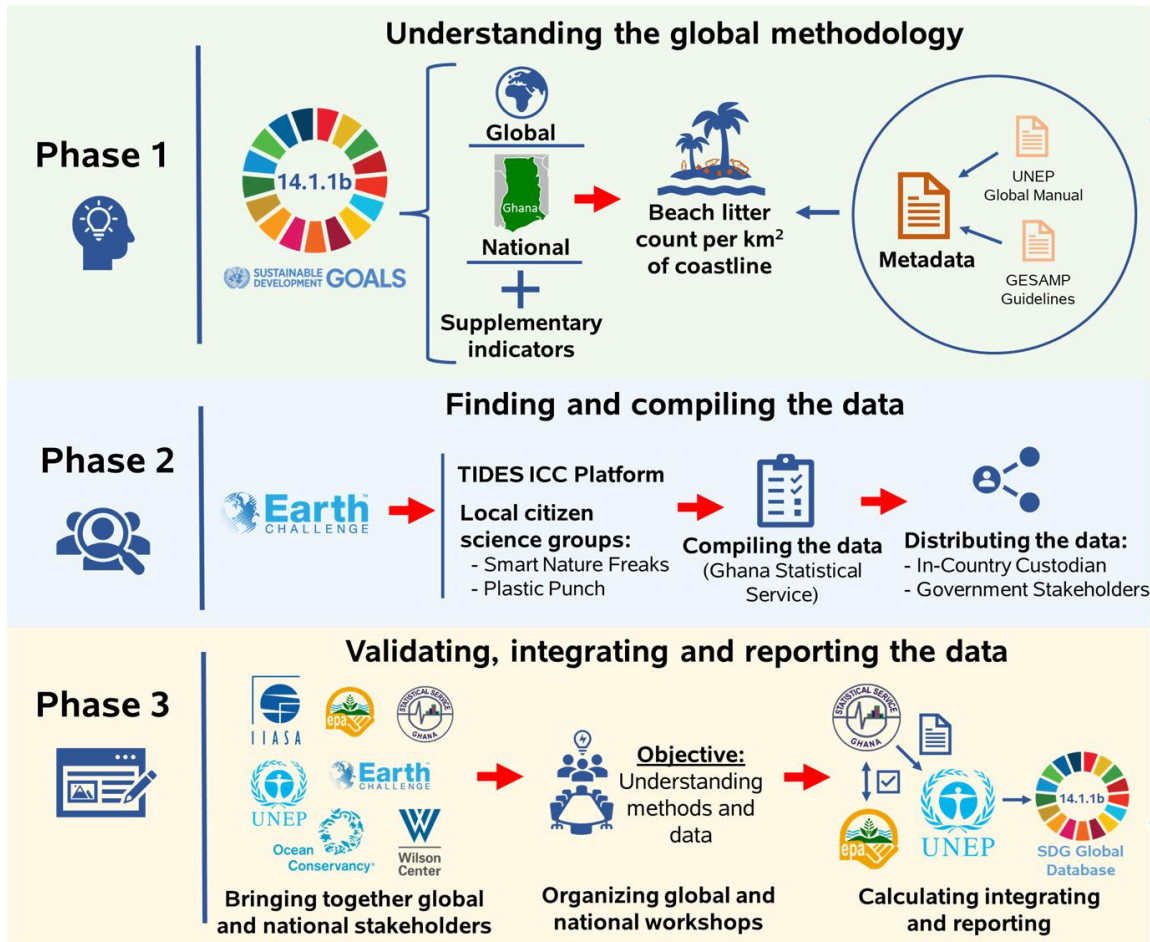
REQUISITE DATA TO SUPPORT THE FOLLOWING INTERVENTIONS IS LACKING

Change in the number of trips between any two districts in each region



- ✓ Disease Surveillance
- ✓ Disaster Response Resourcing
- ✓ Vaccination Campaign Planning
- ✓ Annual Poverty Mapping to give local and annual estimations
- ✓ Energy Grid Regulation
- ✓ Sanitation Planning
- ✓ Health prevalence indicators (with dynamic denominators)
- ✓ Real-time internal migration models
- ✓ Day/night -time population for health service
- ✓ Urban planning / vehicular traffic

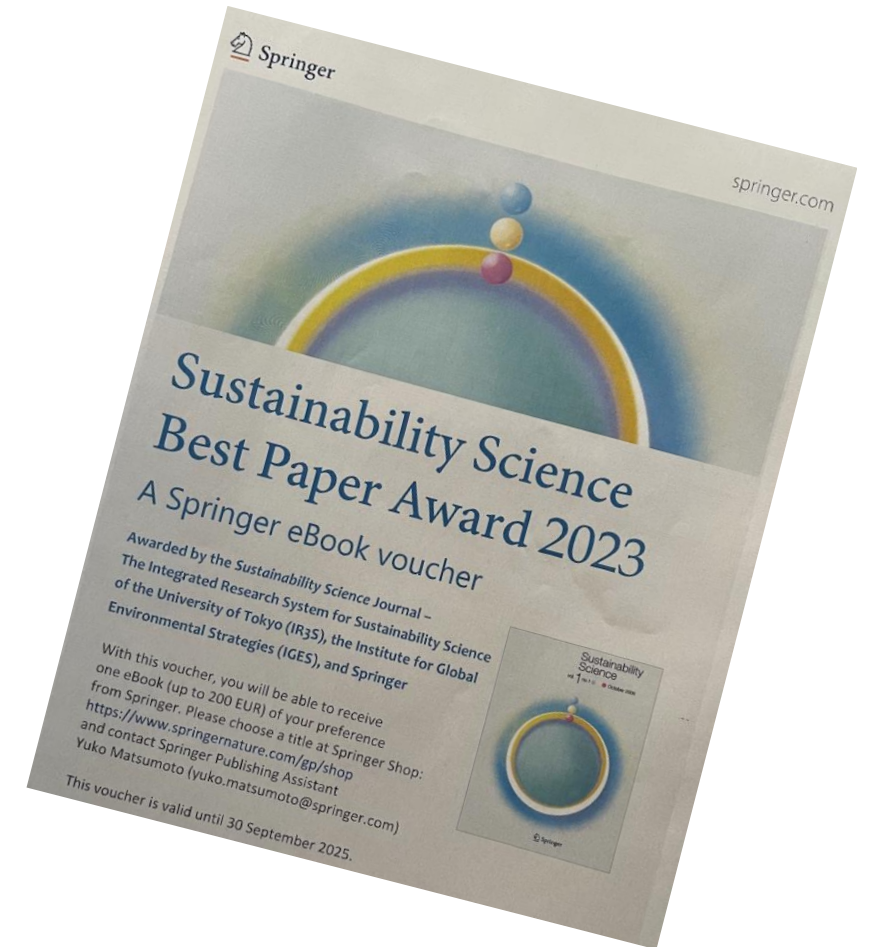
Monitoring Marine Litter in Ghana (SDG 14.1.1b)



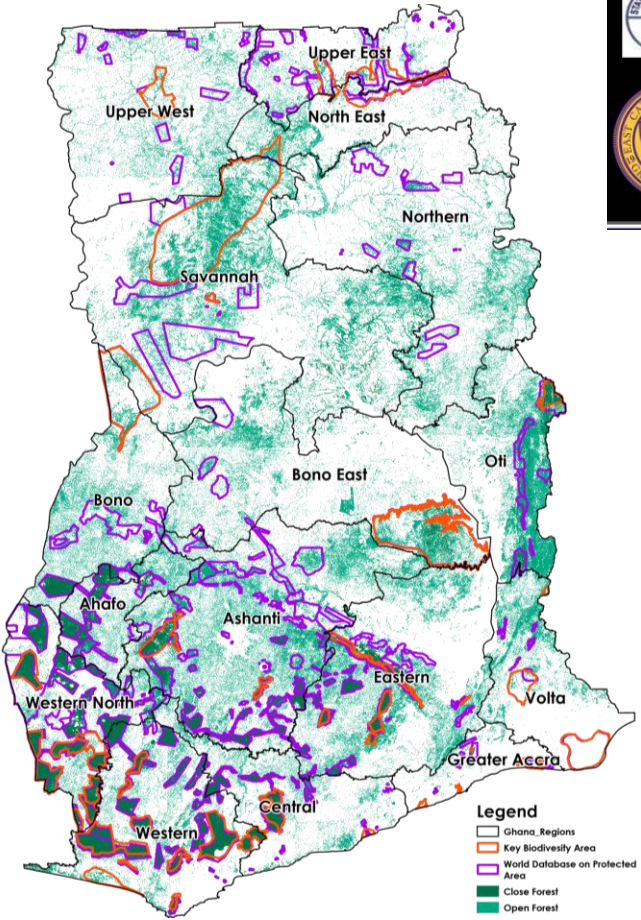
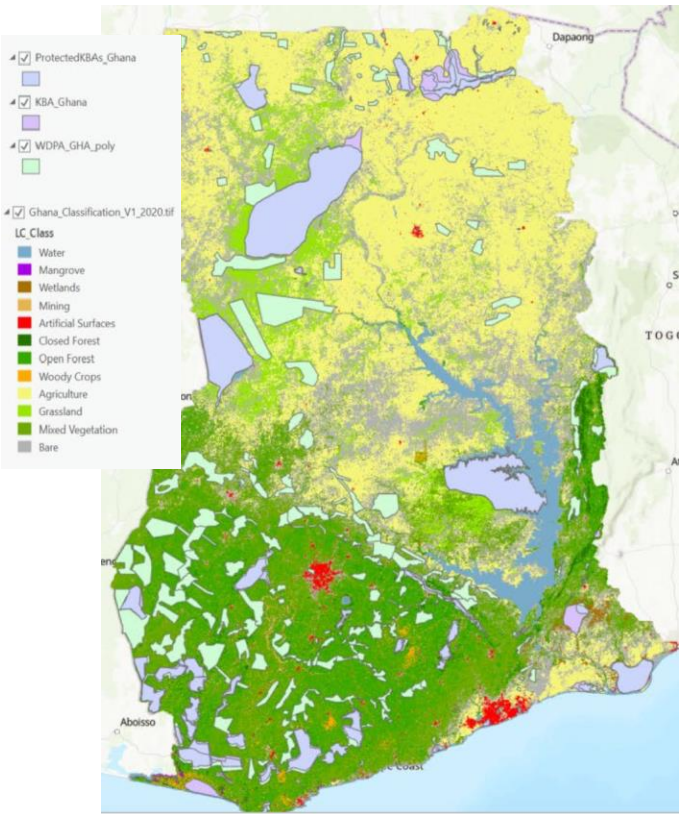
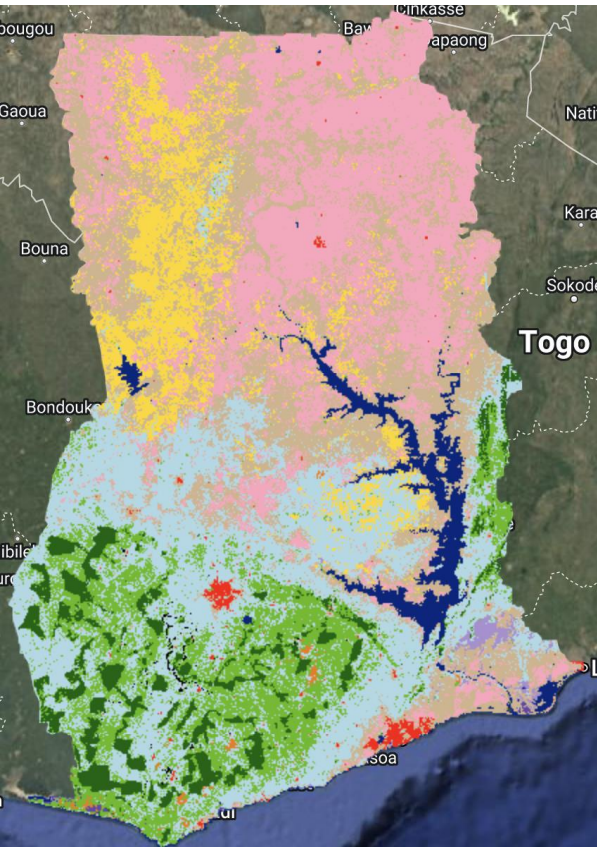
Align the ICC methodology with the global 14.1.1b indicator methodology

Facilitate support to the local citizen science groups for future data collection activities

Ensure policy uptake and impact



Using Earth Observation for SDG 15 Monitoring (SDGs 15.1.1; 15.1.2; 15.4.1)



Interactive results are here:
<https://amandajpayton.users.eart-hengine.app/view/agu-results>

Going beyond reporting

- Baselines
- Periodicity
- Methodological alignment
- Alignment with changing national and sectoral policy documents

**Thank you for your
attention**



**GHANA
STATISTICAL SERVICE**