



Unidad de Análisis de Políticas  
Sociales y Económicas

# Sustainable Development Goals (SDG) Monitoring Mechanism in Bolivia

Adhemar D. Esquivel Velásquez



Workshop on Data and Statistics for Evidence-based  
Voluntary National Reviews (VNRs)

Vienna, December 2019

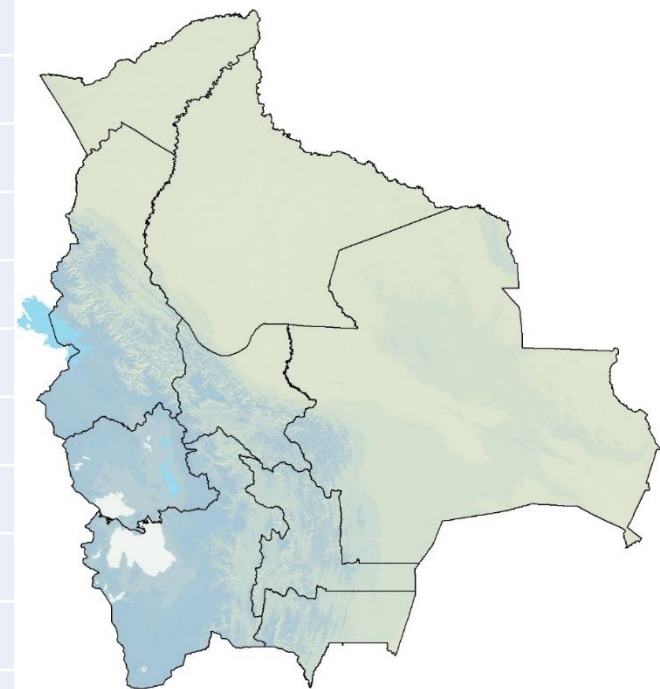
# Content

- Overview of Bolivia
- Link National Plan with SDGs
- Monitoring mechanism
- Challenges

# Plurinational State of Bolivia



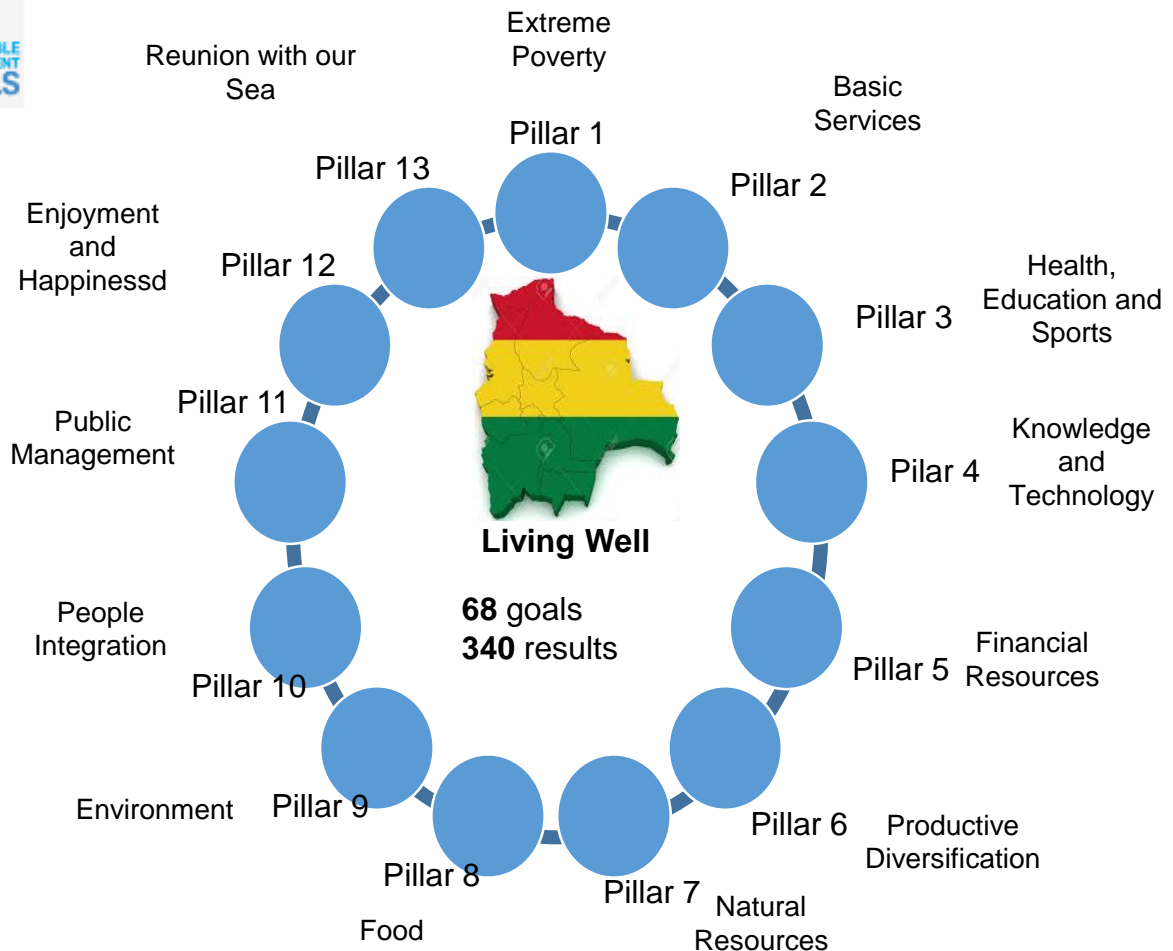
Total área (SQ KM)	1.1 million (SQ KM)
Population:	11.5 million inhabitants
Women	49.6%
Men	50.4%
Urban proportion	69.7%
Population density	10 inhabitants per SQ KM
Ethnicity	36
Life expectancy at birth:	73.5 years
Women	77 years
Men	70 years
Total Fertility Rate	2.7
Infant Mortality Rate	24 per 1,000 live births
Maternal Mortality Ratio	160 por 100,000 live births
GDP per capita	US\$ 3,589
People living in extreme poverty	15.2%



# SDG and the Economic and Social Development Plan of Bolivia (PDES) 2016-2020



**169 goals**  
**230 indicators**



# SDG and the Economic and Social Development Plan of Bolivia (PDES) 2016-2020



The goals of the Pillars of the Economic and Social Development Plan of Bolivia are related to the Sustainable Development Goals (SDGs).



Among its goals, it establishes the eradication of extreme poverty and significant reduction of moderate poverty

The first pillar of the national plan is directly related to the SDG 1



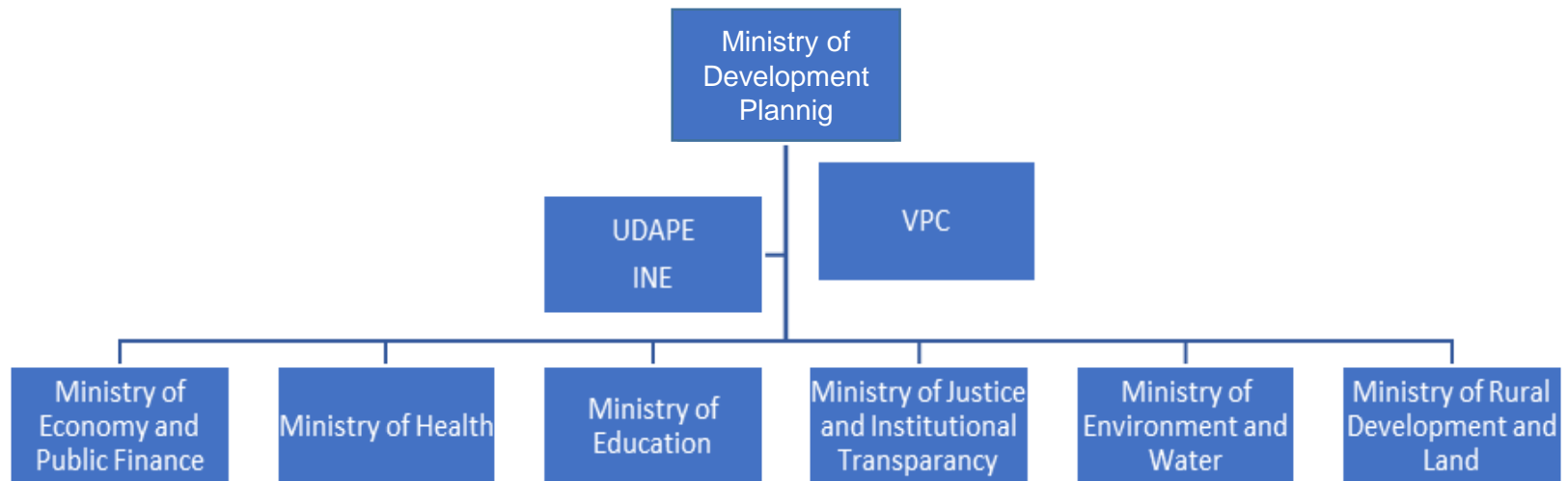
It aims to end poverty in all its forms.

# Monitoring Mechanism

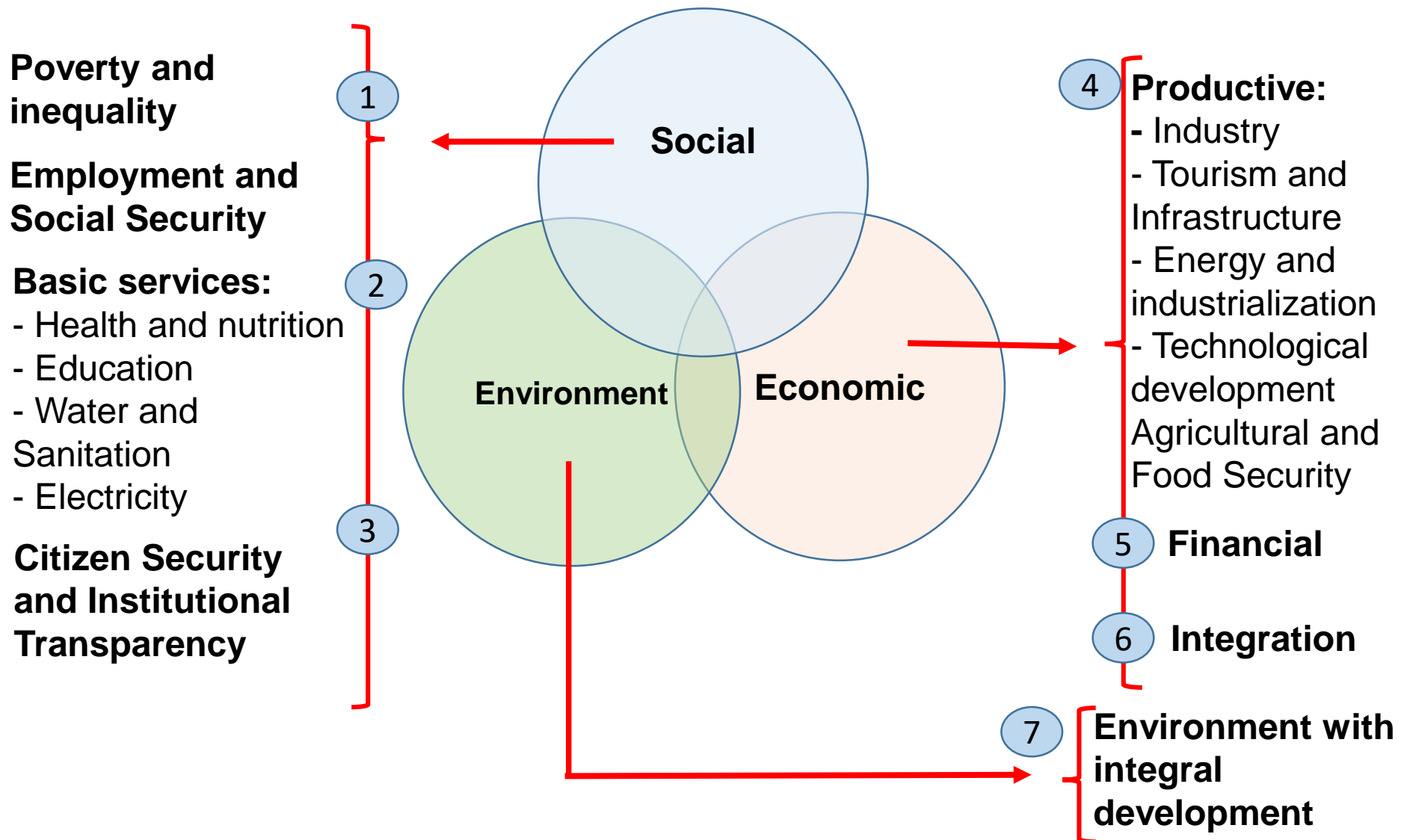


## Multiministerial Resolution N° 001 of October 30, 2017

- Creates the Interinstitutional Committee of the PDES and Sustainable Development Goals - CIMPDS, as the technical team responsible for monitoring for the achievement of the results and goals of the PDES related to the SDGs.



# Formation of commissions and subcommissions



# Relation among the Social Development Plan of Bolivia (PDES) and the SDG



Social Area	PDES Pillar/goals	SDG Goals
Poverty and inequality/ Employment and Social Security	<b>Pillar 1:</b> <b>1.1</b> , 1.2, 1.3, 1.4, <b>1.5</b> y 1.6 <b>Pillar 6:</b> <b>6.10</b>	<b>1.2</b> , 1.3, <b>8.5</b> , 8.7, 10.1, <b>10.2</b> , 10.3, <b>16.1</b> , 16.2.
Basic services	<b>Pillar 2:</b> 2.1 y 2.3 <b>Pillar 3:</b> 3.1, 3.2, 3.3 y 3.4., 8.1 y 8.2	2.1, 2.2, 3.1, 3.2 3.3 3.4, 3.7, 3.b, 3.c, 4.1, 4.2, 4.3, 4.5, 4.6, 4.a, 4.c, 6.1, 6.2, 7.1, 11.1, 11.2 y 17.19.
Citizen Security and Institutional Transparency	<b>Pillar 11:</b> 11.1, 11.2, 11.3, 11.4 y 11.5	11.3, 16.1, 16.2, 16.3, 16.4, 16.5, 16.6 y 16.7



# Relation among the Social Development Plan of Bolivia (PDES) and the SDG



Economic area (productive, financial and integration)	PDES Pillar/goals	SDG Goals
Industry	<b>Pillar 6:</b> 6.2, 6.9, 6.11 y 6.12	8.2, 9.2, 17.11, 8.3, 9.3, 17.12, 9.2 y 8.3
Turism and infrastructure	<b>Pillar 6:</b> 6.2	8.9
	<b>Pillar 2:</b> 2.4	9.1 y 11,2
Energy and industrialization	<b>Pillar 6:</b> 6.1	8.2 y 9.2
	<b>Pillar 7:</b> 7.2	7.2, 7.b y 9.2
Technological development	<b>Pillar 2:</b> 2.2	9c
	<b>Pillar 4:</b> 4.1, 4.2, 4.3, 4.4, 4.5 y 4.6	2.3, 2.4, 2.5, 2.a, 3.b, 9.5, 9.b y 9.c.
	<b>Pillar 7:</b> 7.2	8.2 y 9.5
Agriculture and food Security	<b>Pillar 6:</b> 6.3, 6.4, 6.5, 6.6, 6.7, 6.8, 6.9, 6.10, 6.11 y 6.12	1.1, 1.4, 2.2, 2.3, 2.4, 2.5, 2.b, 2.c, 6.4, 9.2, 9.3, 15.b, 15.2, 15.3, 8.2, 8.3, 8.b, 9.3, 10.4, 10.a, 11.b, 17.10, 17.12
	<b>Pillar 8:</b> 8.2, 8.3, 8.4 y 8.5	2.1, 2.2, 2.3, 2.4, 2.5, 2.b, 2.c

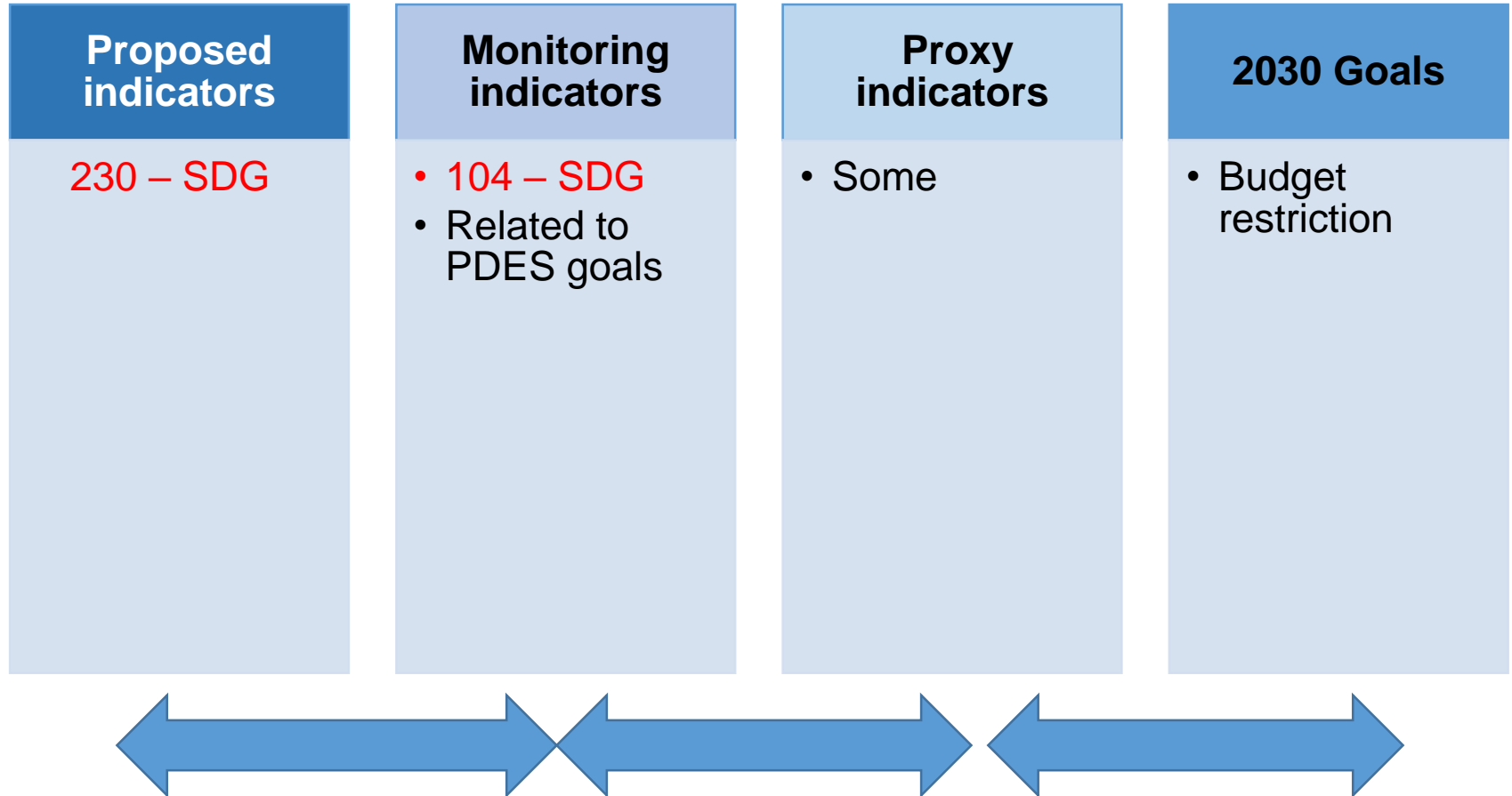
# Relation among the Social Development Plan of Bolivia (PDES) and the SDG



Economic area (productive, financial and integration)	PDES Pillar/goals	SDG Goals
<b>Financial sector</b>	<b>Pillar 5:</b> 5.1, 5.2, 5.3, 5.4 y 5.5	1.4, 2.3, 2.c, 8.2 y 8.3, 9.3, 10.b, 17.3, 17.4, 17.5 y 17.13
<b>Integration</b>	<b>Pillar 10:</b> 10.1, 10.2, 10.3, 10.4, 10.5 y 10.6	8.4, 13.a, 12.8, 13.2, 13.3, 16.7, 16.8, 17.16, 8.8, 10.7, 10.c
		1.b, 2.a, 10.a, 17.6, 17.9, 10.6 y 17.10

Environment	PDES Pillar/goals	SDG Goals
<b>Food security</b>	<b>Pillar 9:</b> 9.1, 9.2, 9.3, 9.4, 9.5, 9.6, 9.7 y 9.8	2.4, 6.a, 6.6, 9.4, 11.5, 11.6, 11.b, 12.4, 12.5, 13.a, 13.1, 13.2, 13.3, 15.1, 15.2, 15.5

# SDG monitoring



# Challenges



- Strengthen the statistical capacity to produce indicators to monitor the PDES - SDG goals.
- Improve statistical production quality
- Develop and strengthen existing sources of information in the sectors (Administrative records)
- Prepare the Voluntary National Report for year 2020

# Thanks



[www.udape.gob.bo](http://www.udape.gob.bo)

[aesquivel@udape.gob.bo](mailto:aesquivel@udape.gob.bo)