

Spatially Enabling Government: The US Geospatial Platform geoplatform.gov

Tenth United Nations Regional Cartographic Conference for the Americas
Tuesday, August 20th, 2013

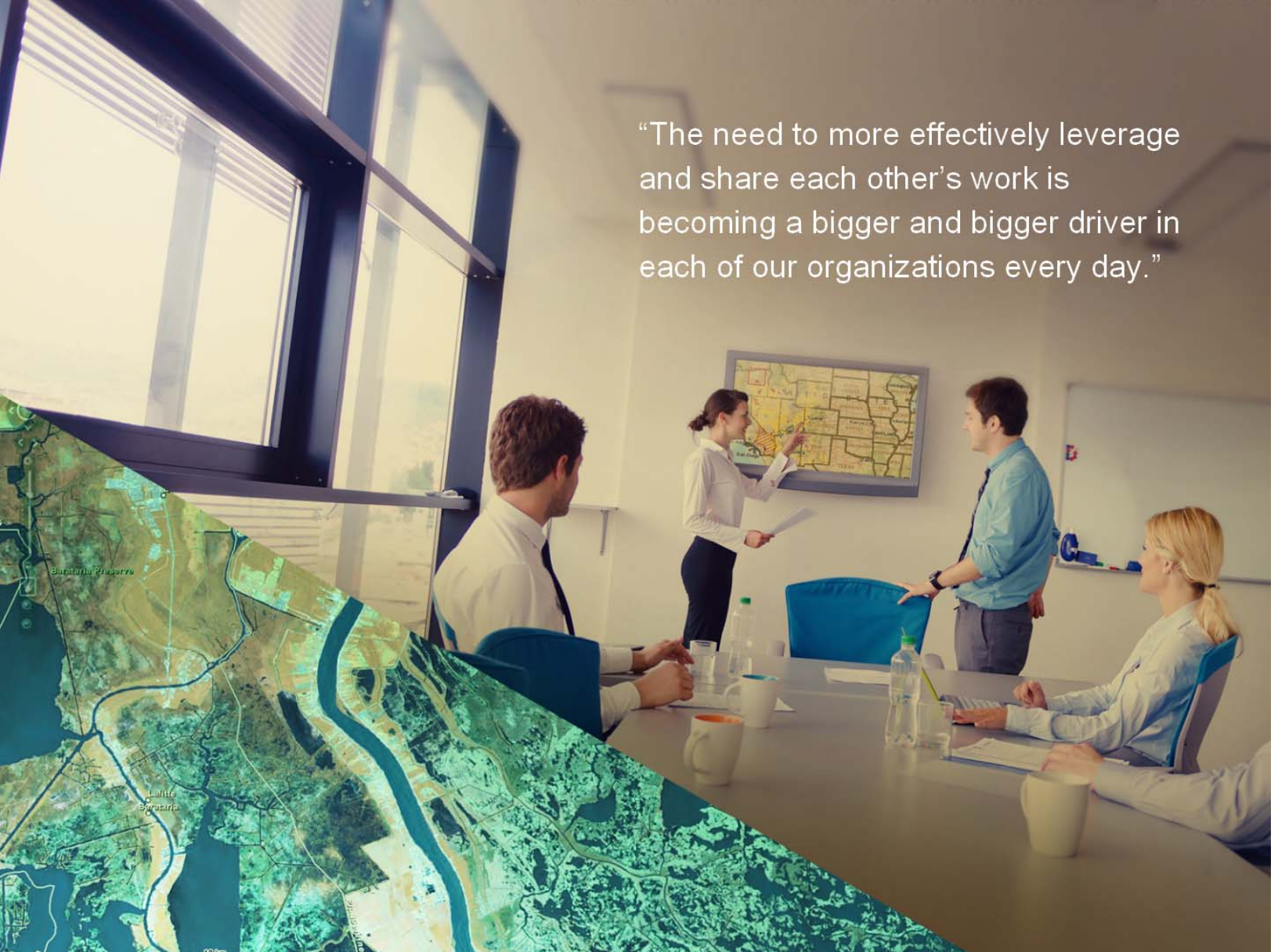
Harvey Simon, Geospatial Information Officer, Office of Environmental Information

US Environmental Protection Agency simon.harvey@epa.gov

Adrian Gardner Chief Information Officer, Goddard Space Flight Center, National Aeronautics and Space
Administration, adrian.gardner@nasa.gov

Tim Trainor, Chief, Geography Division, U.S. Census Bureau, timothy.f.trainor@census.gov

“The need to more effectively leverage and share each other’s work is becoming a bigger and bigger driver in each of our organizations every day.”



RestoreTheGulf.gov

- HOME
- COUNCIL
- ASSISTANCE
- HEALTH & SAFETY
- FISH & WILDLIFE
- ENVIRONMENT
- NEWS

Natural Resource Damage Assessment

After an oil spill, federal agencies study the effects through the Natural Resource Damage Assessment process, identifying the impacts to natural resources, best methods for restoration, and amount of restoration required.

[Learn About the Recovery](#)



NOAA Photo

Latest News

[Gulf Coast Ecosystem Restoration Council Announces Public Engagement Sessions in Gulf States](#)

Wednesday, February 6, 2013 - 18:15
 The Gulf Coast Ecosystem Restoration Council (the Council) today announced the dates for upcoming public engagement sessions to provide early opportunities for initial input into the Comprehensive Plan for Gulf Coast restoration. Public engagement sessions will be held in Mississippi on February 19, in Louisiana on February 19, 20 and 21, and in Florida on February 28. The Council will announce

[The Path Forward to Restoring the Gulf Coast](#)
 Tuesday, January 29 2013

[ROV wraps up investigation](#)
 Tuesday, December 18 2012

[Gulf Coast Ecosystem Restoration Council to Help Rebuild the Gulf Coasts' Ecosystems and Economies in the Wake of the Deepwater Horizon oil spill](#)
 Friday, November 30 2012

[Read More News](#)

 **Featured Fact Sheet**
 Natural Resource Restoration Program
 (PDF, 2 pages - 1.9 MB)



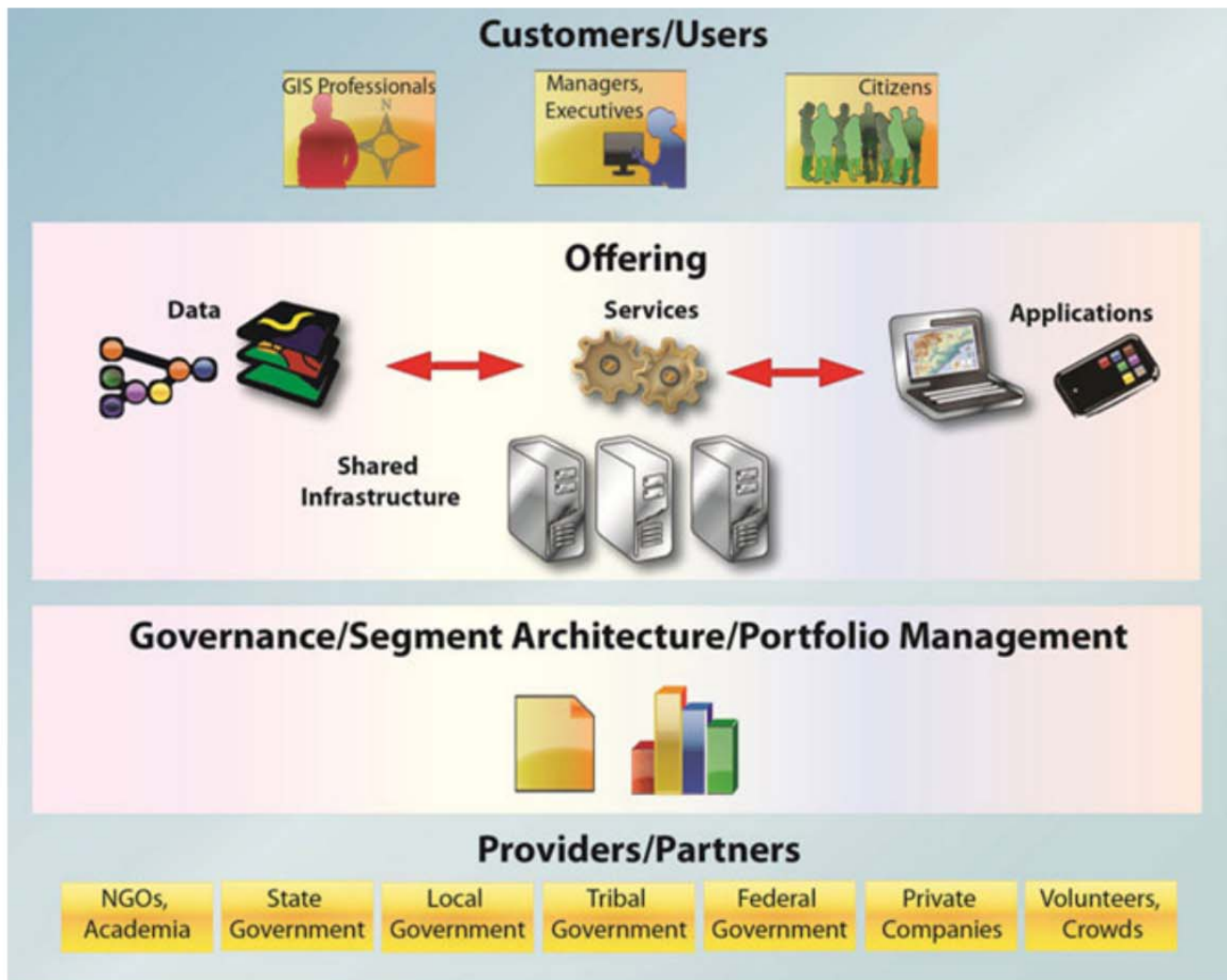
[Download Fact Sheet](#)



Budget Language for FY 2011, Direction to create the “Geospatial Platform”

- Portfolio Management, prioritize investments based on business need
- Leverage existing initiatives
- Improve the governance framework
- Address the requirements of State, local and tribal agencies
- Reuse data, tools and architecture
- Increase access to geospatial data

Conceptual Model



fgdc

Federal Geographic Data Committee



Smithsonian Institution



US Army Corps of Engineers

FGDC Key Activities

- NSDI Strategic Plan (Version 2)
http://www.fgdc.gov/nsdi-plan/index_html
- A-16 Implementation Plan
http://www.fgdc.gov/policyandplanning/a-16/index_html
- Geospatial Platform – <http://www.geoplatform.gov>
- FY 12 FGDC Annual Report: http://www.fgdc.gov/library/whitepapers-reports/annual%20reports/2012/index_html
-

Geospatial Platform V1

The screenshot shows the homepage of the Geospatial Platform V1. At the top left is the logo, which consists of a globe icon and the text "GEOSPATIAL PLATFORM". To the right of the logo is a navigation menu with links for "Resource Center", "Show: Web Content Only", "Help", and "Sign In". Below this is a secondary navigation bar with links for "HOME", "GALLERY", "MAP", "GROUPS", and "MY CONTENT", along with a search box containing the text "Find maps, applications and more...".

The main content area has a dark green background. On the left, it says "Welcome to the Geospatial Platform" and "The Geospatial Platform provides shared and trusted geospatial data, services, and applications for use by government agencies, their partners and the public". On the right, there is a "Featured Map:" section with a thumbnail image of a soil survey map and the text "USA Soil Survey".

Below the main content area are three white boxes with green accents:

- Featured Maps:** Includes an icon of a globe with a magnifying glass and the text "Explore featured maps and apps from all levels of government."
- Collaborate in Groups:** Includes an icon of three people silhouettes and the text "Work in public and private groups with others who share your interests and ideas."
- Build Your Own Map:** Includes an icon of a tablet displaying a map and the text "Create a map you can view anywhere on any device and share with anyone."

At the bottom left, there is a link "About the Geospatial Platform" with a right-pointing arrow icon.



GEOPLATFORM.gov

[Overview](#) | [Data](#) | [Maps](#) | [Communities](#) | [Resources](#) | [Market Place](#) | [Labs](#)

[Sign In](#) | [Register](#) | [Help](#)

Collaborate

Discover

Share

Go to Advanced Search

Type a search term above to search the content of the site. For a more specific search, click on "Go to Advanced Search".

Explorer

Look at popular datasets and find out what can be done with various datasets. If you're looking for a specific dataset either use the search feature or browse datasets by category.

Developer

Find resources to develop your own datasets, resources on data formats, and find examples of what others have done and how they've done it.

Publisher

Upload and register your datasets here to share with other FGDC members and agencies. You retain ownership of all datasets you publish to the GeoPlatform, but others can use your data.

Recent Data Updates

National Wetland Inventory
USFWS Annual Update Registered and Published; Added to Environmental,

Social Media

Twitter
MapGuy: Waiting to see the updated #geoplatform at the #FedGIS. 9:29am

News

America's Great Outdoors Community Established
GSA Explores Facilities Management



EPA GeoPlatform Effort

- Over 800 registered EPA users for epa.maps.arcgis.com
- Shared internal geospatial hosting environment
- Business Line Pilots (Enforcement Targeting, Community grants, and Environmental Justice Screening, Toxic Releases, Emergency Response Viewers, and Drinking Water)
- User needs interviews with thirty offices completed; continuing process
- Deputy Administrator issued memo announcing availability and require use of platform for new development: Access to GeoPlatform content now provided through custom Intranet site.
- Using geoplatform to power standardized public maps embedded in EPA's public site.

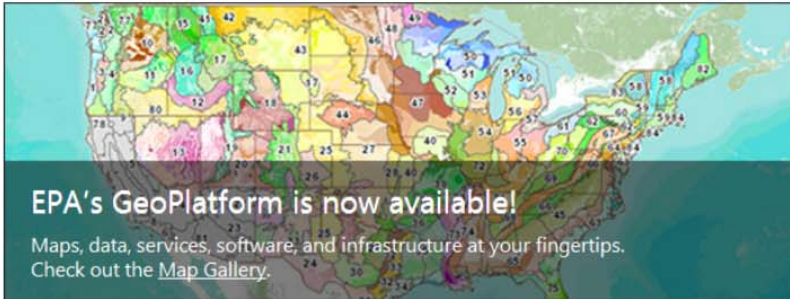
EPA GeoPlatform

Enterprise Licenses

GIS Community

Policies

Get Help



EPA's GeoPlatform is now available!

Maps, data, services, software, and infrastructure at your fingertips. Check out the [Map Gallery](#).

About EPA Geospatial

The term "geospatial" refers to anything that has a geographic location on the earth. EPA's National Geospatial Program coordinates the Agency's geospatial data, applications, policies and programs.

Featured Story - Enforcement Pilot

Read about the [Enforcement Pilot Energy Extraction Initiative](#). The Enforcement Pilot for the EPA GeoPlatform was designed to target inspections and enforcement within the land-based energy extraction industry utilizing EPA data sources as well as external sources.

Applications

These [applications](#) will allow you to look at maps that contain information about air quality, water quality, hazardous waste and the environment in your neighborhood. Some of these applications are for technical users.

Geo News & Happenings

- ▶ [EPA GeoPlatform Webinars](#)
- ▶ [GeoPlatform Map Gallery-check it out!](#)
- ▶ [GIS Listserv](#)
- ▶ [GIS Workgroup Quickr](#)

Data

EPA's geospatial data show locations of environmental interest such as air quality, Superfund sites or waste water facilities. These data can be discovered through EPA's [Environmental Dataset Gateway](#) and can be viewed and analyzed using EPA's GeoPlatform, ArcGIS Desktop or by using other geospatial tools.

Search for Geospatial Data

This tool allows you to search the EPA's Environmental Dataset Gateway (EDG).

Find Data



Regional GIS Intranet Web Sites:

- [EPA Region 1](#) - Connecticut, Maine, Massachusetts, New Hampshire, Rhode Island, Vermont
- [EPA Region 2](#) - New Jersey, New York, Puerto Rico, US Virgin Islands
- [EPA Region 3](#) - Delaware, District of Columbia, Maryland, Pennsylvania, Virginia, West Virginia
- [EPA Region 4](#) - Alabama, Florida, Georgia, Kentucky, Mississippi, North Carolina, South Carolina, Tennessee
- [EPA Region 5](#) - Illinois, Indiana, Michigan, Minnesota, Ohio, Wisconsin
- [EPA Region 6](#) - Arkansas, Louisiana, New Mexico, Oklahoma, Texas
- [EPA Region 7](#) - Iowa, Kansas, Missouri, Nebraska
- [EPA Region 8](#) - Colorado, Montana, North Dakota, South Dakota

EPA GeoPlatform

Enterprise Licenses

GIS Community

Policies

Get Help

Featured Applications

- All EPA Grants
- Community Based Grants

Categories

- Agriculture
- Air
- Boundaries & Base Data
- Climate Change
- Ecological
- Emergency Response
- Energy
- Enforcement
- Grants
- Land & Cleanup
- Pilots
- Regulated Facilities
- Waste
- Water

Map Gallery: Featured Content on EPA's GeoPlatform

Search maps Q



Koppen-Geiger Observed ...



This time-enabled Map displays observed and predicted climate shifts from

[Show more...](#)

Natural Gas Mining



Map of the DOE & EPA Top 100 Gassy Coal Mines in the US, Coalbed Methane ...

[Show more...](#)

National Wetlands ...



Map showing status and detail of the National Wetlands Inventory

[Show more...](#)

Soil Survey Map



Map showing U.S. Soil Survey Data including SSURGO and STATSGO

[Show more...](#)

Priority Watersheds, EPA ...



Priority Watersheds and EPA Existing Investment Watersheds in Region 4

[Show more...](#)

U.S. Census 2010 ...



This map contains the core enumeration units used for the 2010 census. The ...

[Show more...](#)

Dun & Bradstreet Crop ...



Dun & Bradstreet ...



Region 10 Goods Movement ...



Find an address

Enter the address

Locate Clear

Elevation Profiles

Draw a line or point with the tools below to view the elevation in that area.

Data Layers and Legend

Layer Visibility

- PVSC Deployment - H2S
- Community Air Monitoring Site
- Region 2 - Program Assessments
- WEB EOC Feed
- NYS DOT Assessment Status
- FEMA High Resolution Surge Area (11/11/2012)
- FEMA Hurricane Sandy Surge Data
- Interim 30-meter Storm Surge Extent 110112

Emergency Response Guide

Draw a spill location: Calculate by: **Chemical**

Material: **1,1-Dimethylhydrazine**

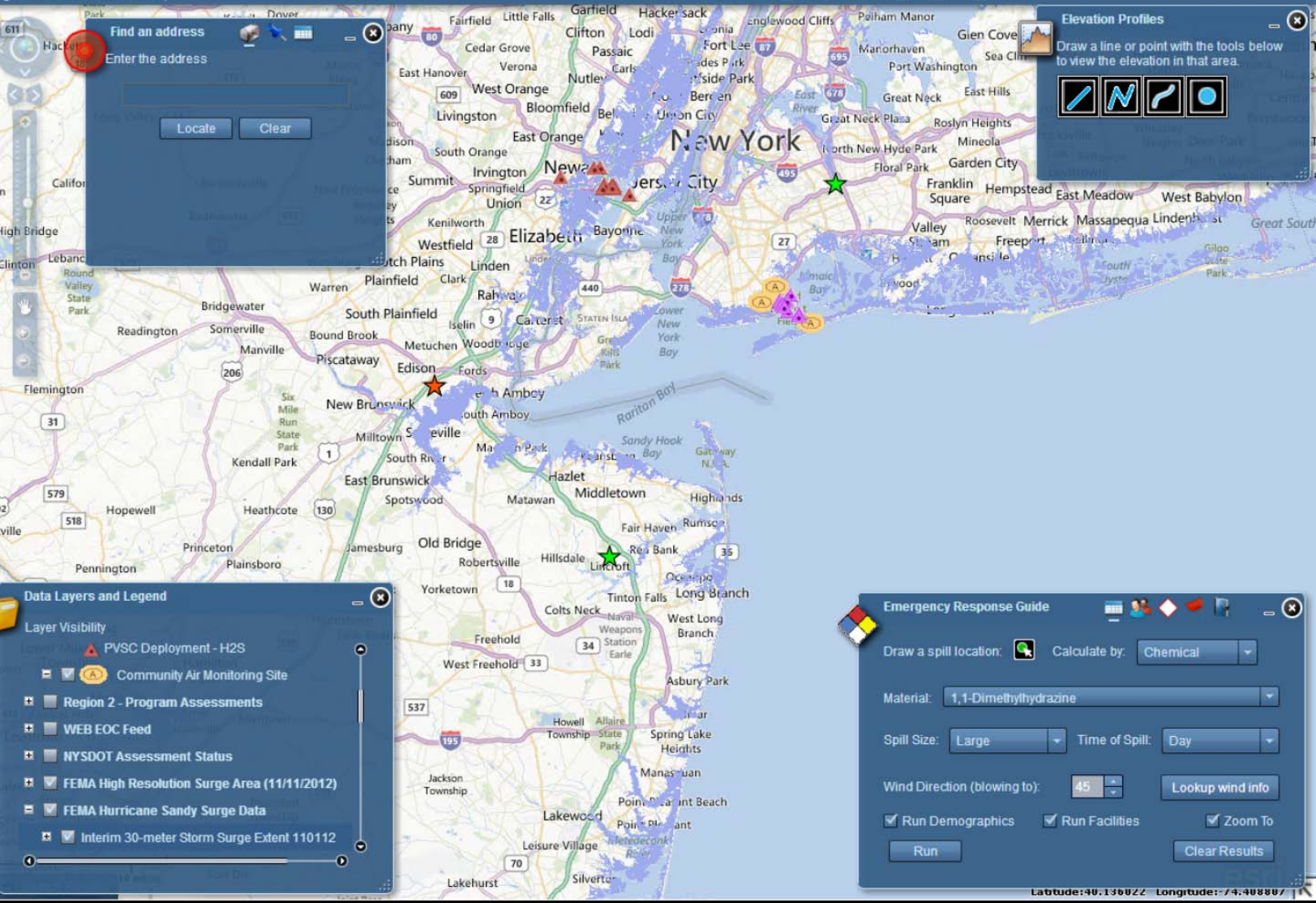
Spill Size: **Large** Time of Spill: **Day**

Wind Direction (blowing to): **45** **Lookup wind info**

Run Demographics Run Facilities Zoom To

Run **Clear Results**

Latitude: 40.130022 Longitude: -74.408807



NEPAssist Report | US Environmental Protection Agency - Windows Internet Explorer

http://nepassisttool.epa.gov/NEPAVetoolsPublic

File Edit View Favorites Tools Help

NEPAssist Report | US Environm...

National Report

Project Location	40.750185,-73.96905
Within 0.5 miles of an Ozone 8 - hr Non-Attainment Area?	yes
Within 0.5 miles of a PM2.5 Non-Attainment Area?	yes
Within 0.5 miles of a Lead Non-Attainment Area?	no
Within 0.5 miles of a Federal Land?	no
Within 0.5 miles of an impaired stream?	no
Within 0.5 miles of an impaired waterbody?	yes
Within 0.5 miles of a waterbody?	yes
Within 0.5 miles of a stream?	yes
Within 0.5 miles of an NWI wetland?	click here May take several minutes
Within 0.5 miles of a Toxic Substances Control Act (TSCA) site?	yes
Within 0.5 miles of a RADInfo site?	no
Within 0.5 miles of a Brownfields site?	no
Within 0.5 miles of a Superfund site?	no
Within 0.5 miles of a Toxic Release Inventory (TRI) site?	no
Within 0.5 miles of a water discharger (NPDES)?	yes
Within 0.5 miles of an air emission facility?	yes
Within 0.5 miles of a hazardous waste (RCRA) facility?	yes
Within 0.5 miles of a school?	yes
Within 0.5 miles of an airport?	no
Within 0.5 miles of a hospital?	no
Within 0.5 miles of a designated sole source aquifer?	no
Within 0.5 miles of a historic property on the National Register of Historic Places?	yes

Local intranet 110%

al Protection Agency - Windows Internet Explorer

epa.gov/nepassist/nepamap.aspx?action=searchloc&wherestr=1%20Units

Help

mark on Delicious EPA Remote Access F5 Support Portal CTS # 866 9... Information Services Branch EPA Geoplatform Onlin

epa... NEPAssi... United Nati...

United States Environmental Protection Agency

Advanced Search

CE & TECHNOLOGY LAWS & REGULATIONS ABOUT EPA

» NEPAssist Home » NEPAssist Map

Select Map Contents

- EPA Facilities
- Water Monitoring Stations
- Places
- Transportation
- Water Features
- Nonattainment Area
- Boundaries
- Demographics 2010
- Demographics 2000
- Soil Survey Map
- NWI Wetlands
- USA Topo Map
- National Land Cover 2006



250 yds

Local intranet 110%

NEPAssist

- NEPAssist is an environmental impacts screening tool developed by EPA and now a public application for all of the US.
- NEPAssist is a screening tool for environmental reviews and project planning.
- USAID has funded EPA to transfer the application to other countries. It has been deployed by local agencies in El Salvador. Nicaragua. Costa Rica. Guatemala. Honduras, Dominican Republic, and Chile.

Geospatial Platform V2



Federal Geographic Data Committee


[Home](#) | [Overview](#) | [Data](#) | [Maps](#) | [Communities/Agencies](#) | [Resources](#) | [Market Place](#) | [Labs](#) | [Help](#)

Collaborate

Discover

Share

FGDC Releases Newest Version of the Geoplatform



Type a search term above to search the content of the site.

Top Searches

- [Geoplatform](#)
- [FGDC](#)
- [Data](#)
- [Maps](#)

Explorer

Look at popular datasets and find out what can be done with various datasets. If you're looking for a specific dataset either use the search feature or browse datasets by category.

[→](#)

Developer

Find resources to develop your own datasets, resources on data formats, and find examples of what others have done and how they've done it.

[→](#)

Publisher

Upload and register your datasets here to share with other FGDC members and agencies. You retain ownership of all datasets you publish to the Geoplatform, but others can use your data.

[→](#)

Recent Data Updates

- [USACE Regulatory Boundary - St. Paul District \(MVP\)](#)
- [United States Interagency Elevation Inventory](#)
- [Impervious Surface Analysis Tool](#)

Featured Events



- [FGDC Coordination Group Meeting](#)
Washington United States Tue, 2013-08-13 09:00 to 15:00
- [ESRI International User Conference](#)
San Diego United States Mon, 2013-07-08 07:30 to Fri, 2013-07-12 12:00

[more](#)

News

- [FGDC Seeks Nominations for National Geospatial Advisory Committee](#)
- [FGDC endorses ISO 19156:2011, Geographic information - Observations & Measurements](#)
- [FGDC endorses the OGC® WaterML 2.0: Part 1- Timeseries Encoding Standard](#)

Discovering Geospatial Assets



[Overview](#) | [Data](#) | [Maps](#) | [Communities/Agencies](#) | [Resources](#) | [Market Place](#) | [Labs](#) | [Help](#)

Dataset Type [Clear All](#)
Geospatial (47) [✕](#)
[Show More Dataset Type](#)

Tags [Clear All](#)
Earth Science (18)
Environment (16)
Biota (15)
Oceans (15)
English (11)
[Show More Tags](#)

Formats [Clear All](#)
HTML (16)
TAR (8)
ZIP (8)
WMS (7)
[Show More Formats](#)

Groups [Clear All](#)
Ecosystems (47) [✕](#)
Ocean (5)
Energy (1)
[Show More Groups](#)

Dataset Catalog

Note that only datasets marked as "Federal" are subject to the U.S. Federal Government and Data.gov's [Data Policy](#). Non-federal participants (e.g., universities, organizations, and tribal, state, and local governments) maintain their own data policies. It is important that users understand the data policies of participating entities in order to best utilize these datasets. A description of this catalog and information about the datasets presented and associated metrics is available [here](#).

47 datasets found Order by: **Relevance** ▾

Dataset Type: **geospatial** [✕](#) Groups: **Ecosystems** [✕](#)

A GLOBAL DATABASE OF SOIL RESPIRATION DATA, VERSION 2.0 Federal
National Aeronautics and Space Administration -This data set provides an updated soil respiration database (SRDB), a near-universal compendium of published soil respiration (RS) data. Soil respiration, the...
[HTML](#) [HTML](#) [HTML](#) [HTML](#)

AERONET Federal
National Aeronautics and Space Administration -AERONET (Aerosol RObotic NETwork) is an optical ground based aerosol monitoring network and data archive supported by NASA's Earth Observing System and expanded...
[HTML](#) [HTML](#) [HTML](#)

Atlantic Offshore Seabird Dataset Catalog Federal
U.S. Geological Survey, Department of the Interior -Several bureaus within the Department of Interior compiled available information from seabird observation datasets from the Atlantic Outer Continental Shelf...
[Eeri REST](#) [Eeri REST](#)

Partnership with Platform


GEOPLATFORM.gov fgdc
Federal Geographic Data Committee

[Overview](#) | [Data](#) | [Maps](#) | [Communities/Agencies](#) | [Resources](#) | [Market Place](#) | [Labs](#) [Help](#)


[NOAA Home](#) | [Featured Datasets](#) | [Map Gallery](#) | [Featured Applications](#) | [Hurricanes and Storms](#) | [Data Groups](#)

Welcome to NOAA

The NOAA Community on the National Geoplatform provides NOAA customers, partners, and staff members with a centralized platform for discovering and accessing much of NOAA's distributed geospatial data, services, and applications.




Overview




NOAA is an agency that enriches life through science. Our reach goes from the surface of the sun to the depths of the ocean floor as we work to keep citizens informed of the changing environment around them.

Hurricanes & Storms



This ArcGIS Online group provides access to authoritative NOAA web map services and applications in support of the 2013 hurricane season.

MarineCadastre.Gov



MarineCadastre.gov, a partnership between the Bureau of Ocean Energy Management and the National Oceanic and Atmospheric Administration's Coastal Services Center, provides spatial data, viewers, tools, and technical support for offshore renewable and conventional energy projects and marine

Developer Resources

Developer Overview

Welcome to the GeoPlatform.gov Developer Pathway. On this site you will find the tools, documentation, downloads and forums to help you, collaborate, discover, consume and distribute your geospatial data, web maps, apps and maps.

Use this space to ask questions, suggest enhancements and embrace your inner geotek along with others. Share your knowledge and ideas, and most importantly push the limits of what the data can do.



[How to Store Maps](#) ➔

[How to Publish in the Map Gallery](#) ➔

[How to Access Web Services](#) ➔

[Go to Advanced Search](#)

Type a search term above to search the content of the site. For a more specific search, click on "Go to Advanced Search".

API's

Both Desktop and web based APIs are described here, and how you can discover, consume and use the data from GeoPlatform. Using your development skills in Python, .NET, Flex or Javascript you'll be visualizing and analyzing data in a matter of minutes using our examples and code snippets..

Map Gallery

Share your amazing cartographic skills or view other Developers and Analysts Maps and Apps, for download, or use. See what cool new things your peers are doing and use them to enhance your analysis or viewer. Find a new base map, or a new plug in for your use



Tools

Find the right tool for the right geojob. Look through the GeoPlatform's specialized plug-ins and widgets to find how to interface the GeoPlatform's data collection, collaboration and discovery capabilities with your web viewer, mobile app or

Documentation

Wondering what is Python and how you can use it to help you run your latest analysis? Just started playing around with Spatially enhanced SQL? Looking for specific information about a function or call? Search our document repository to find information on both vendor

Downloads

Ready to start your first web map? Looking for desktop software? Click on our downloads page to find the latest APIs and Desktop applications from vendor specific products and the open source community. Or access the GeoPlatform's GitHub Community and fork what we've been working

Forum

Got a question, or some free time to answer one? Post or search our forums for questions about how to use the GeoPlatform to enhance your application or analysis. Feel free to ask questions about anything related to geo as well, we won't delete it, we promise.

Communities - National Blueways System

 GEOPLATFORM.gov

fgdc
Federal Geographic Data Committee

Search



Overview

Data

Maps

Communities/Agencies

Resources

Market Place

Labs

Help

NBS Home

Maps

Featured Datasets

Community Resources

Welcome to Our Community

National Blueway System

This is the National Blueways System's portal for data, information, and resources to support people engaged in our efforts. Our goal is to enhance discovery of and access to data and information for planners, stakeholders, and the public. Please visit our Feedback page to tell us what would make the site more useful to you as we expand our content.



Program Overview



The importance of rivers runs deep through the fabric of America. Because of the critical importance of rivers to our communities, our economies and our health, the National Blueway System will recognize stakeholder partnerships that are working to make rivers and watersheds healthy and resilient now and for the future...

Connecticut River



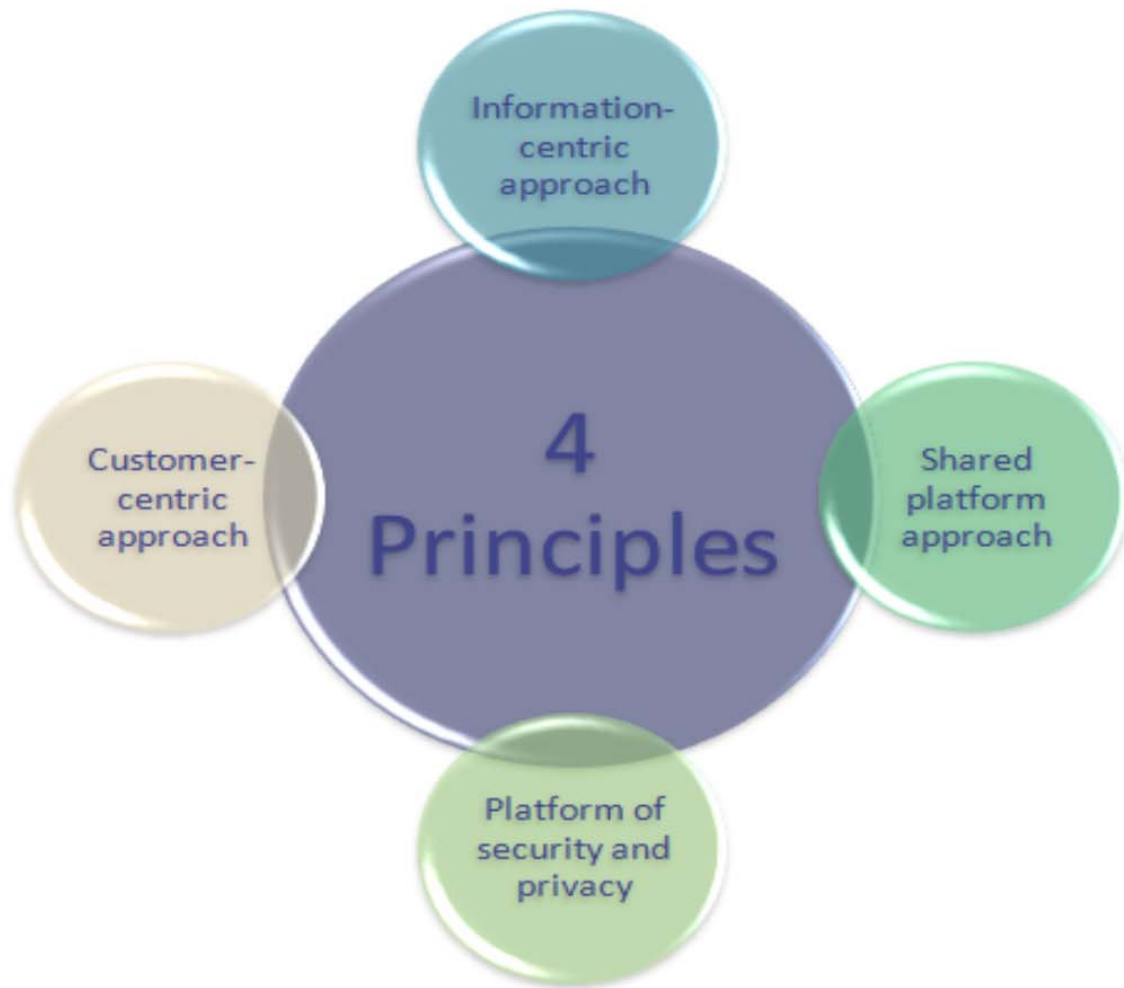
The Connecticut River courses more than 410 miles through four states – New Hampshire, Vermont, Massachusetts and Connecticut – before reaching Long Island Sound. New England's longest river, the Connecticut's 11,985-square-mile watershed supplies water and essential services to 2.3 million people...

Blueway Maps



Build, share, and improve resources in the National Blueway System, such as Webmaps, Layers, and Applications. Discover and share maps in the four Blueway program areas: Outdoor Recreation, Conservation, Environmental Education, and Sustainable Economic Development.

U.S. Digital Government Strategy



<http://www.whitehouse.gov/sites/default/files/omb/egov/digital-government/digital-government.html#top>

Developer Central

Putting the pieces together today. To build a better tomorrow.

Service enabled green product data Now Available.

What are Design for the Environment products?

The EPA's Developer Central is designed to serve students and junior developers, as well as seasoned professionals. On this website, you can learn how to access environmental data using featured EPA Web services. If you are looking for a place to start, view our sample code and build on one of our initial projects. We also encourage you to contact us directly and tell us about your app project.

Is this site for you?

Featured Services

Obtain data and/or code from resources such as the Envirofacts RESTful Data Service API for your use.

See All

- Envirofacts API
- UV Index

Sample Code

Get started quickly with sample code in various languages that make use of the Envirofacts RESTful Data Service API.

See All

- Android
- iOS
- .NET
- PHP

Open Source Apps with EPA Data

Download open source application code, to use and learn from in building apps with EPA Data.

See All

- madewithdata

Developer Feedback and Discussion

- Make a suggestion
- Tell us about your app product
- Submit a question about our featured services
- Frequently Asked Questions

Additional Services

- Data.gov
- Other Federal Developer Resources
- Other EPA Resources

Access Data with Census APIs

- Main
- Data Sets
- Geography
- App Gallery

Developer Forum

Join our [Developer Forum](#) to submit questions, provide feedback, and share ideas to help the Census Bureau as it makes data available through APIs.

Using the API

- [Request a Key](#)
- [Data Sets](#)

Download Data

To download full data sets, visit our [FTP Server](#)

Print | Share this page | Connect with us

Census Bureau APIs

To improve access to data and encourage innovation, the Census Bureau has begun to provide API access to some data sets. We invite developers to use these APIs, join our Developer Forum, and provide feedback to help us move forward with continued API development.

Please read the [Terms of Service](#) for using the API.

Note on URL base: Please note the the URL of the API has changed to [api.census.gov](#).

Accessing Data

Data are accessible to software developers through a stateless HTTP GET request. Up to 50 variables can be requested with a single API call. In order to access data, you will need to insert a key into the request URL in order for query results to be returned. If you do not have a key assigned to you, you will be directed to the Request a Key page where you can register for one.

1) Example of the request URL for 2010 Census SF1 data that has an assigned key inserted:

http://api.census.gov/data/2010/sf1?key=b48301d897146e8f8ef9bef3c6eb1fcb864cf&get=P0010001,NAME&for=state:*

2) Example of the request URL for ACS 2010 5 Year data for Total Population for California and New York:

http://api.census.gov/data/2010/acs5?key=b48301d897146e8f8ef9bef3c6eb1fcb864cf&get=B02001_001E,NAME&for=state:06,36

3) Example of the request URL for ACS 2010 5 Year data for Gross Rent as a Percentage of Household Income, 10.0 to 14.9 percent for all counties in CA:

http://api.census.gov/data/2010/acs5?key=b48301d897146e8f8ef9bef3c6eb1fcb864cf&get=B25070_003E,NAME&for=county:*&in=state:06

4) Example of the request URL for 2010 Census SF1 white population of 12 year olds in Alabama

[http://api.census.gov/data/2010/sf1?key=\[user key\]&get=PCT012A015,PCT012A119&for=state:01](http://api.census.gov/data/2010/sf1?key=[user key]&get=PCT012A015,PCT012A119&for=state:01)

Query Response

The response for all queries is formatted as a two dimensional JSON array where the first row provides column names and subsequent rows provide data values.

An example query response looks like this:

```
[["P0010001","NAME","state"],  
["710231","Alaska","02"],  
["4779736","Alabama","01"],  
["2915918","Arkansas","05"],  
["6392017","Arizona","04"],  
["3775797","California","06"],
```


Common Challenges

- Ease of use is really hard
- Data are everywhere ... but publishing for secondary use can be rough on data owners
- The cloud has awesome potential ... but is really tricky to implement for governments
- “Who am I?” ... is not such an easy question for open systems to answer
- I can mash up all this data... but then what?