



INDONESIA EXPERIENCE IN IMPLEMENTING SEEA

*Lunchtime Seminar on “Scaling Up the SEEA
Implementation Towards the 2020 Targets”,
March 6th 2017*

KECUK SUHARIYANTO

Chief Statistician, BPS-Statistics Indonesia

Email: kecuk@bps.go.id

OUTLINE



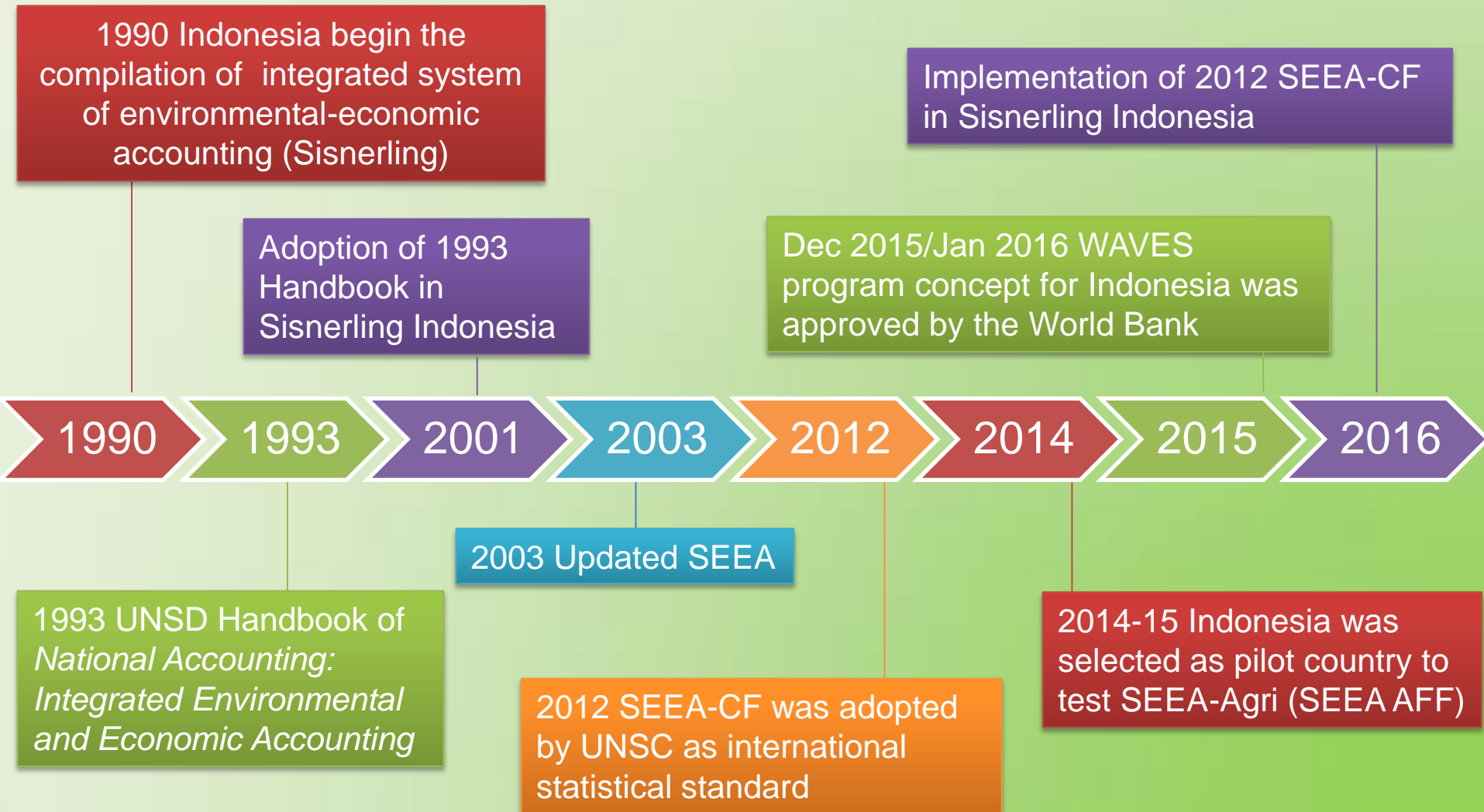
The Story of SEEA in Indonesia

Policy Uses

Lessons Learned

Way Forward

THE STORY OF SEEA IN INDONESIA



PHASES OF IMPLEMENTATION

PHASE 1:

- Ownership and institutionalization
- Policy Issues
- Prioritized account
- Current initiatives



PHASE 2:

- Data availability
- Data gap analysis
- Capacity Building
- Socialization



PHASE 3:

- Drafting strategic plan to compile environmental account



PHASE 4:

- Implementation



THE SCOPE OF SEEA

The application of national accounts concepts, frameworks and classifications for a statistical description of environmental-economic dependencies

Environmental accounting measure:

1. Physical flows in the economy (flows account)
2. Environmental capital or asset (asset account)
3. Environmental-related activity in the economy (environmental expenditure, production of environmental goods and services, etc.)
4. Adjusting national account aggregate (environmentally adjusted GDP of green GDP, adjusted net saving, net wealth, etc.)

Asset accounts for :

- Timber resources (physical & monetary)
- Energy and mineral resources (physical & monetary)
- Land account for Sumatera (physical)

EPEA/EGSS in-depth study in 17 provinces

Environmentally adjusted GDP



The scope of SEEA implementation in Indonesia 2016

ACCOUNTS DEVELOPED IN INDONESIA

- **Progress up to date:**
 - Asset account for timber and energy & mineral resources (physical & monetary accounts)
 - Asset account for land use and land cover of Sumatera (physical account)
 - In-depth study on EPEA/EGSS statistics
 - Depletion adjusted GDP indicator
- **Future plan:**
 - Continue works on progress above with addition to develop **land account for Kalimantan and Java**
 - **To support SDGs indicators:** energy account, water accounts, air emission account, material flow account
 - Linking land account with ecosystem account

POLICY USES AND SHARING KNOWLEDGE

- **Ministry of Development Planning** prepares analysis on Indonesia vision 2045 and 2085 and expected to establish the next National Medium Term Development Planning 2020-2024 accompanied by Strategic Environmental Assessment (SEA) by conducting policy exercise involving data and information of stocks and flows of natural resources and environment.
- In line with WAVES Programme, **Ministry of Finance** plans to disclosure natural capital in the consolidated report (assets accounts), as a follow-up action from fiscal transparency review by Supreme Audit Board and House of Representatives of Indonesia
- **Ministry of Environment and Forestry** drafted (and have been legalized by Ministry of Justice) government regulation on Economic Instruments for Environmental Protection and Management (PP-IELH) which include depletion adjusted GDP/GRDP

LESSONS LEARNED (1)

1. Building country ownership and institutionalization play a very important role → NCA is complex, need many agencies and professions → to gain access to sectoral data and map.
 - ✓ Coordination does not always go smoothly
 - ✓ National Steering Committee has to be high level and meet regularly
2. Partnership speeds up the implementation. Indonesia uses various international initiatives to help implementing SEEA-CF: UNSD, FAO, World Bank, ESCAP, Australian Bureau of Statistics (ABS).

LESSONS LEARNED (2)

3. Technical Problems:

- ✓ Limitation of map accuracy. There are various maps from different agencies
- ✓ Problem with data quality – need to develop Data Quality Assurance Framework


4. Access to existing information (data and map) need to be integrated in one initiatives

5. Need to create country specific operational manual especially on collecting EPEA/EGSS statistics.

WAY FORWARD



- Establish dedicated unit with stronger link to national accounting
- Strengthen data coordination mechanisms → President Decree on One Map, One Data
- Intensify the use of accounts by engaging and communicating the results with policy makers



“..what we measure shapes what we collectively strive to pursue – and what we pursue determines what we measure”.

Report by the Commission on the Measurement of Economic Performance and Social Progress

**THANK YOU
Terima Kasih**